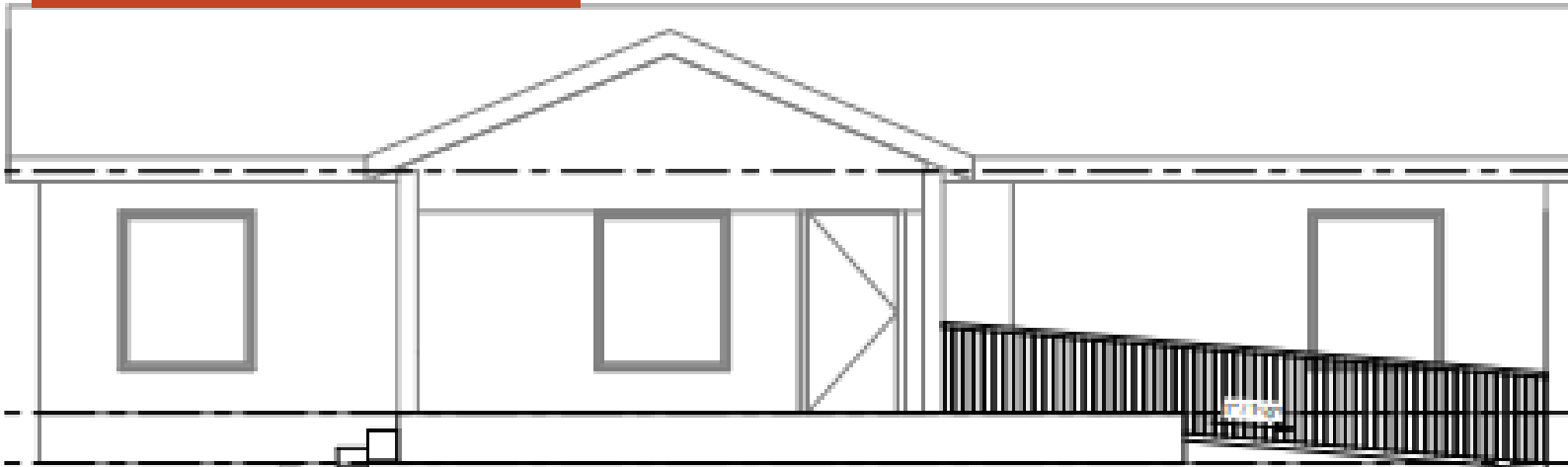


A Tenacious Little Brokerage with a Big Entrepreneurial Spirit



FOR LEASE

The District House



**114 Florida Ave
Winter Garden, FL 34787**

The District House captures the historical and homey feel that Winter Garden brings in the heart of downtown. This farm house inspired building is filled with natural light just steps away from local eateries and coffee shops.

FOR MORE INFORMATION:

*Photo is for inspiration purposes only.



Sharon Williams

Principal



C. (407) 810-0468 | O. (407) 347-4247



Sharon@exchangeplace.net

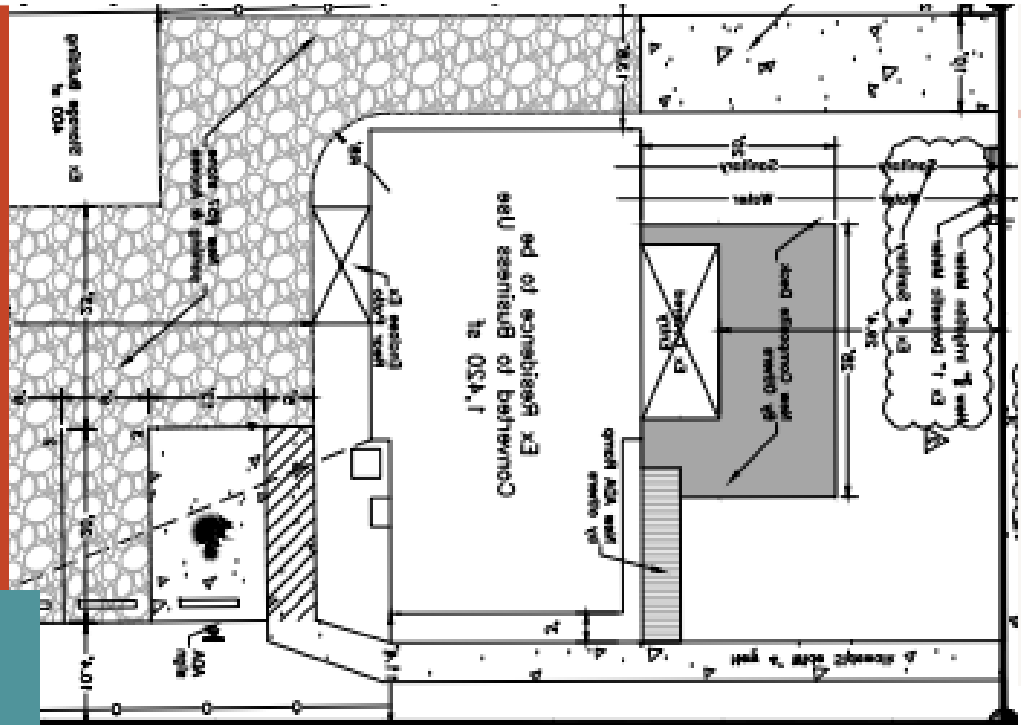


www.exchangeplace.net

EXCHANGEplace INC.

A Tenacious Little Brokerage with a Big Entrepreneurial Spirit

5 dedicated parking spaces, street parking coming soon



Site Plan

Reach us today to reserve your space.

1,428 SF - Available Q4 2023

	Population	Median Age	Avg. HH Income
2 Mile	31,254	37.4	\$108,743
5 Mile	152,426	37.2	\$104,722



FOR MORE INFORMATION:



Sharon Williams
Principal



C. (407) 810-0468 | O. (407) 347-4247



Sharon@exchangeplace.net



www.exchangeplace.net